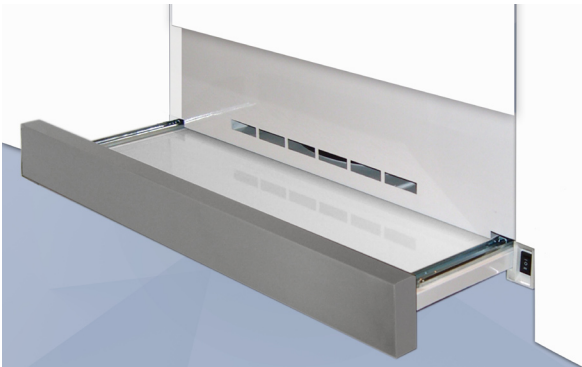


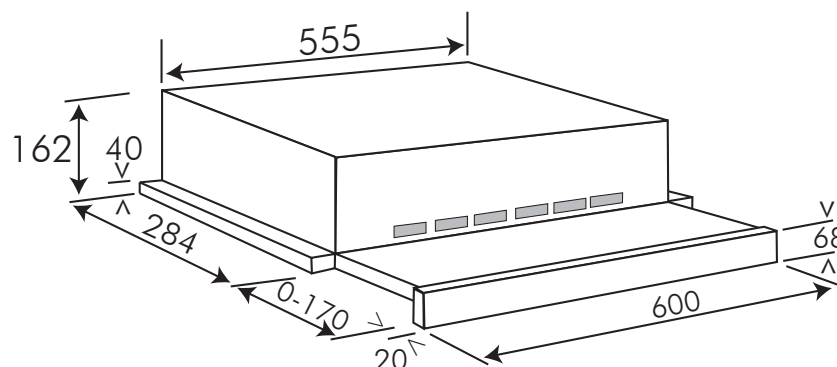
60cm, stainless steel fascia, front-recirculating retractable rangehood



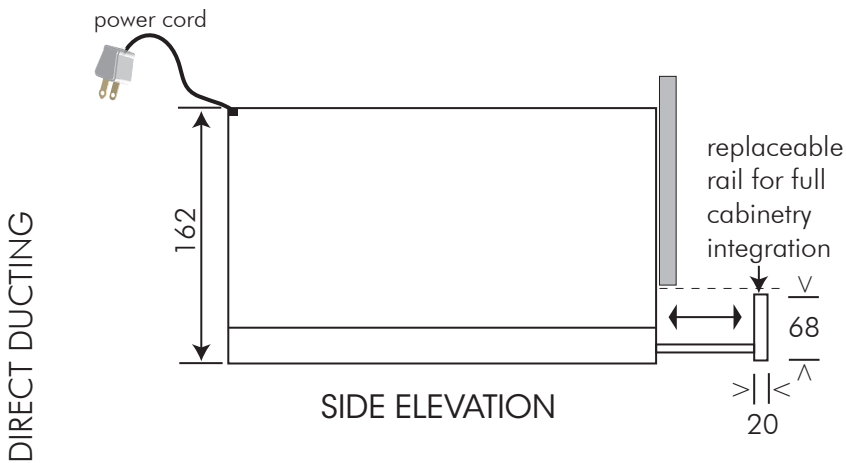
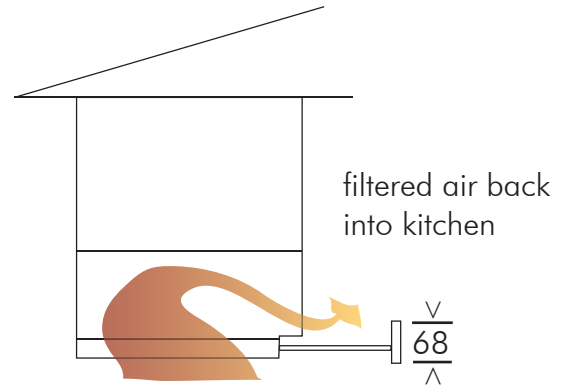
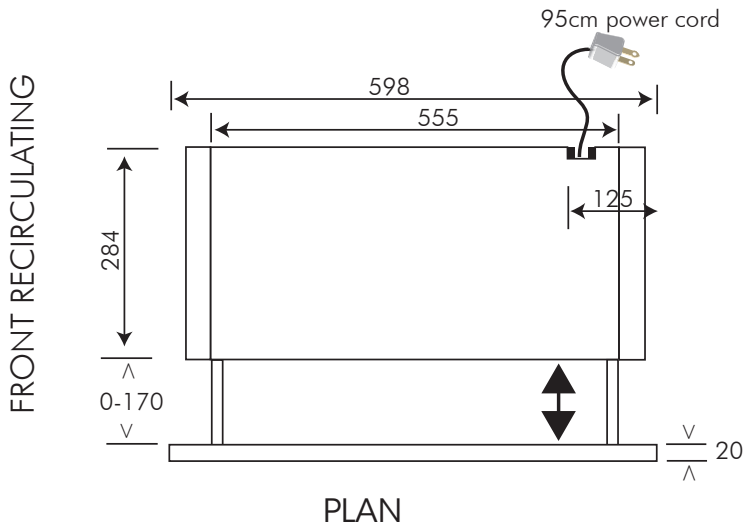
Shown is front-recirculation installation with 68mm high fascia rail and recirculation vents

dimensions	162mmH x 598mmW x 304mmD closed 162mmH x 598mmW x 474mmD open NB: 262mm height when direct ducting
fascia rail	68mmH stainless steel, front recirculating 42mmH stainless steel, direct ducting
integration	fascia rail removable and replaceable for full integration
motor	60 watt
speeds	two: right-hand rocker switch
lighting	2 x 40 watt SES tubular globes
noise rating	38-52 dBA (full)
capacity	310m ³ /hr net, 350m ³ /hr gross
filter	one piece, 3-ply aluminium — removable, washable
supplied	<ul style="list-style-type: none"> • fitted 68mmH stainless steel fascia rail • tape-covered front recirculation vents • accessory 42mmH stainless steel fascia rail • 100mmH spigot adaptor for 125mm diameter ducting direct to atmosphere • template • instructions for installation, operation, maintenance • brackets, screws
electricity supply	240 volt, 50Hz
electrical connection	connected 95cm power cord with 3-pin 10 amp plug
total wattage	140 watts
current	0.583 amp
packaged dimensions	700mm x 375mm x 235mm = 0.062m ³
net weight	6.5kg
gross weight	7.8kg

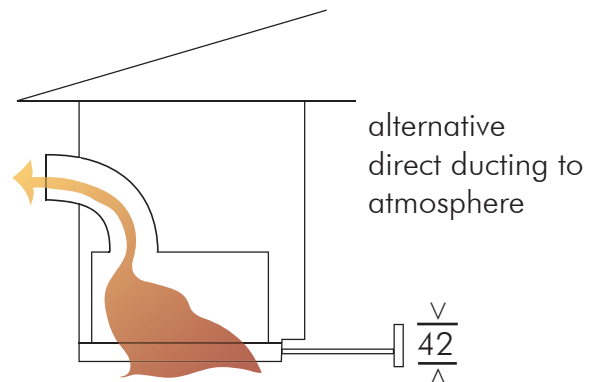
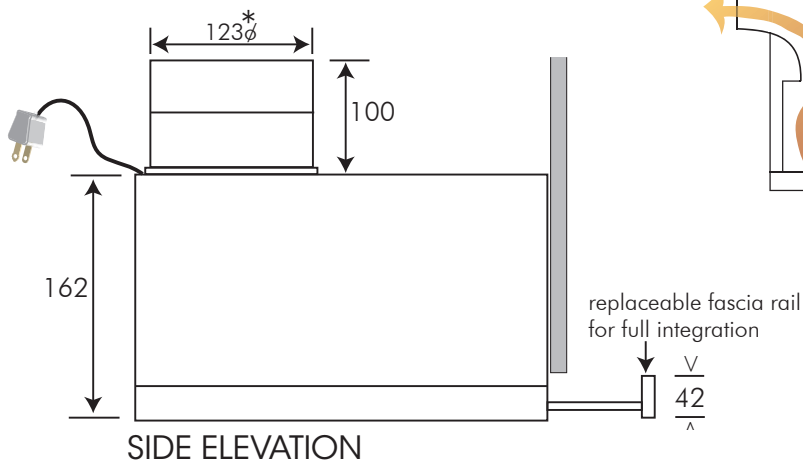
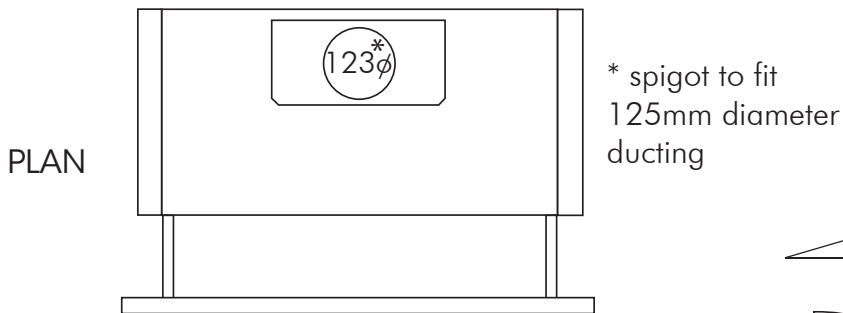
NB: drawings are not to scale — they are to assist only



60cm, stainless steel fascia, front-recirculating retractable rangehood



NB: drawings are not to scale — they are to assist only



WARNING: technical specifications and product sizes can be varied by the manufacturer without notice. Cutouts for appliances should only be by physical product measurements. The above information is indicative only.