

# OF901X freestanding cooker

ID231006  
code OF901X

## 90cm giant electric oven and five burner gas hob



- DIMENSIONS** height 870-940mm with supplied telescopic legs  
780mm net height without legs (can be placed on a plinth)  
width 900mm  
depth 600mm
- SUPPLIED** four black plastic telescopic legs 90mm min, 160mm max  
clip-on stainless steel kickplate supplied for optional fitment

### FUNCTIONS



fan  
forced



defrost



baker's  
function



static  
grill



fan grill



classic  
convection

### oven

121 litre oven  
108 litre net cooking capacity  
five cooking functions plus defrost  
twin fan forced – 2 x 2000 watt rear wall elements  
digital minute minder and LED screen  
double glazed door, thermo-reflective glazing  
forced air door cooling – cool operating  
easy cleaning oven enamelling – AA anti-acid  
safety-notch trays and shelves  
insulated control panel dials and door handle

NB  
60mm high rear splashguard supplied for optional fitment

#### *options*

stainless steel splashbacks  
1600mm H x 900mm W, code 2958  
650mm H x 900mm W, code 14202  
round cast-iron griddle plate, code 9376  
rectangular cast-iron griddle plate, code 9379

### cooktop

spacious five-burner hob, 43.3mj/hour maximum  
automatic electronic flame ignition  
ultra-rapid triple-crown all-purpose burner (wok)  
large rapid and two semi-rapid burners  
low-simmer auxiliary burner  
three heavy-duty cast-iron trivets  
single-pressed stainless steel hob with rolled edging  
no metal joints eliminates difficult grime accumulation  
satin polish – resistant wearing – maintains quality finish  
set for natural gas – regulator supplied  
ULPG adaptable – no regulator supplied  
60mm-high splash guard supplied – optional fitment  
burner skirts and cast-iron burner caps removable for easy maintenance

#### *also supplied*

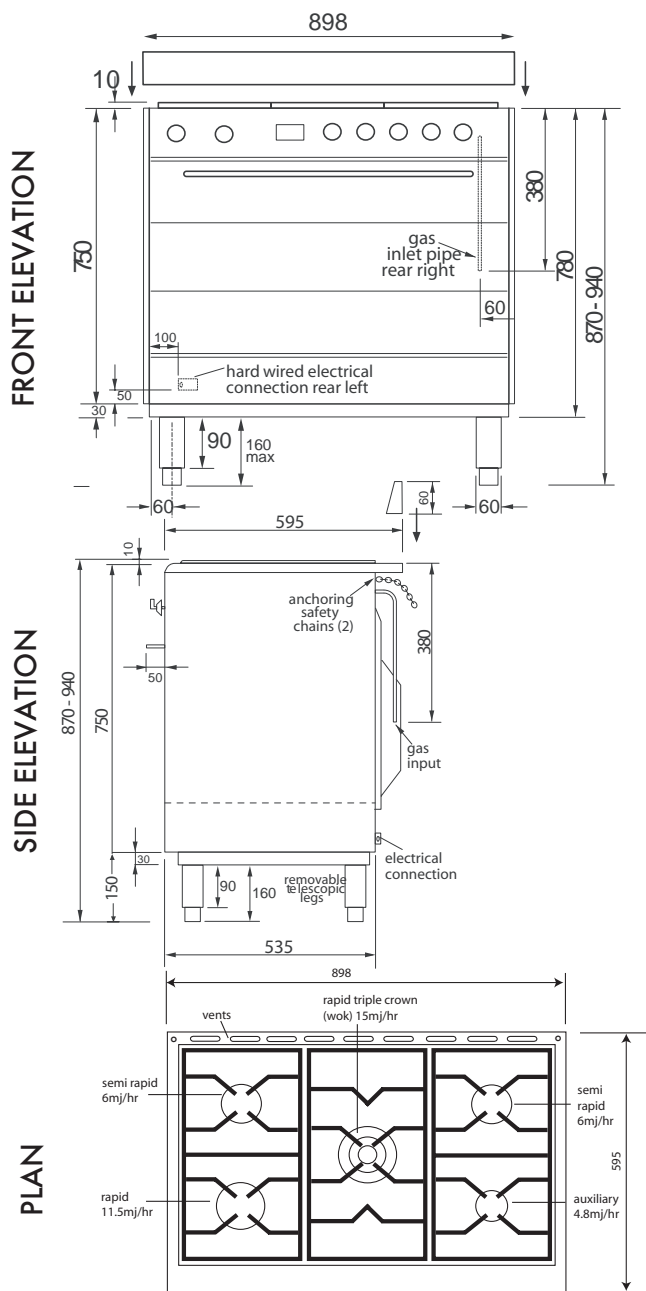
safety handle (pair) for oven  
wok stand for cooktop

**omega**

# OF901X freestanding cooker

ID231006  
code OF901X

## 90cm giant electric oven and five burner gas hob



- HEIGHT** 870–940mm with telescopic legs  
780mm excluding legs
- WIDTH** 898mm
- DEPTH** 600mm
- SPLASHGUARD HEIGHT** 60mm optional fitment supplied
- GROSS WEIGHT** 80kg
- NET WEIGHT** 74kg
- OVEN INTERNAL DIMENSIONS** 350mm H x 770mm W x 450mm D = 121.3 litre
- NET COOKING CAPACITY** 340mm H x 750mm W x 420mm D = 107.8 litre
- ELECTRICITY SUPPLY** 240 volt 50 Hz
- ELECTRICAL CONNECTION** hard wired single phase
- MAXIMUM CURRENT** 17.1 amp
- ALL-GAS HOB** 43.4mg/hour max over five burners
- SUPPLIED** three anti-scratch cast-iron trivets for full gas hob cover  
60mm H x 898mmW splashguard for rear of hob, optional fitment  
4x telescopic black plastic legs  
clip-on stainless steel kickplate  
baking/grill tray  
two chromed-wire shelves  
one teflon biscuit tray  
wok stand
- OPTIONS** stainless steel splashbacks —  
1600mm H x 900mm W, code 2958  
650mm H x 900mm W, code 14202  
round cast-iron griddle plate, code 9376  
rectangular cast-iron grill plate, code 9379
- GAS CONNECTION** ½" BSP gas inlet connection  
½" BSP 1.0 Kpa natural gas, regulator supplied  
adapt for ULPG — no regulator required
- NB** — the four height-adjustable telescopic legs can be removed and the unit positioned on a plinth

### OF901X freestanding cooker

ELEMENT	ROOF		FLOOR	REAR WALL	REAR WALL FAN (2)	COOLING FAN	LIGHT (2)	max wattage	current amp
	inner	outer							
wattage	1600	1250	2100	2000 x 2	25 x 2	24	1 5x 2		
static grill	•	•				•	•	2904	12.1
fan grill	•	•			•	•	•	2954	12.31
classic convection		•	•			•	•	3404	14.2
fan forced				•	•	•	•	4104	17.1
baker's function			•		•	•	•	2180	9.1

Warning: technical specifications and product sizes can be varied by the manufacturer without notice.

Cutouts for appliances should only be by physical product measurements. The above information is indicative only.

**omega**